

**99% of all aloe products available today are not stabilized**

# Promotes healthy, younger looking skin!



- Use before and after sun tanning
- Helps improve all skin conditions
- Helps improve foot and underarm odor
- Use on pregnant abdomen for smoother skin

**Softer, clearer skin, less visible wrinkles!**

## “Stabilized” Aloe: A new Discovery

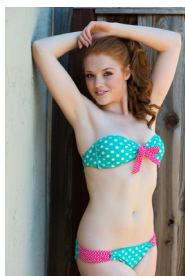
Ancient people knew that only fresh aloe was effective, that’s why people often carried live plants with them as they traveled.

Scientists recently discovered that when the plant is harvested, an enzyme is released that dissolves the most important factor in aloe, acemannan. Using patented technology, we stabilize the aloe by removing the destructive enzyme and freeze-dry it into a concentrated powder.

## Now everyone can enjoy “fresh” aloe anytime!



**Natural NutraGel is great for fair-skinned people!**



**Healthier skin, longer lasting tan! No harmful sunblock chemicals.**



**8.5 oz ( 250 ml)**



Others claim they have 98% aloe *juice*, but the juice is about 96% water. What little aloe it does contain is not even stabilized.



We stabilize the juice from many plants, then free-dry it into a concentrated powder that out-performs even fresh aloe!

### Shea Butter

Shea butter closely resembles the moisturizer produced by your skin’s own sebaceous glands. Loaded with natural vitamin A and E, shea butter is an excellent skin conditioner.

### MSM

MSM (methylsulfonylmethane) is naturally occurring sulfur. Often called the “Miracle Mineral” because it’s good for so many conditions. When applied topically, it softens the skin for less visible wrinkles.

### Coconut oil

Typical moisturizers contain water that quickly evaporates. Coconut oil holds moisture in, while at the same time providing an array of beneficial fats that nourish your skin and help reduce the appearance of wrinkles.

### Ingredients

ionic Silver, water, Coconut oil, Shea butter, MSM, Stabilized aloe, Carbomer, Potassium sorbate, Phenoxyethanol, Aminomethyl propanol